

A1 Birtley to Coal House

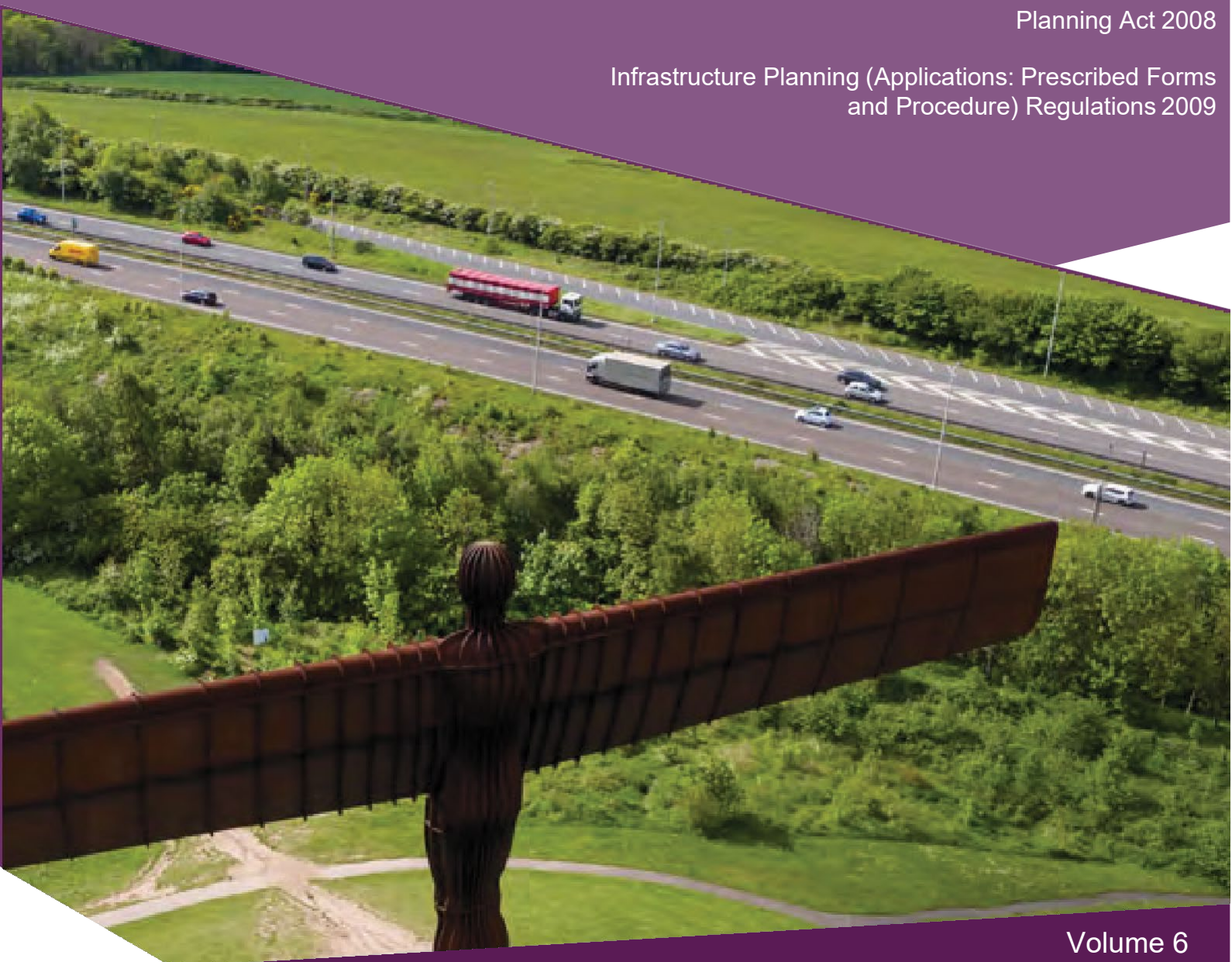
Scheme Number: TR010031

6.2 Environmental Statement – Figures 13.6 Superficial Deposits Designations

APFP Regulation 5(2)(a)

Planning Act 2008

Infrastructure Planning (Applications: Prescribed Forms
and Procedure) Regulations 2009



Infrastructure Planning

Planning Act 2008

**The Infrastructure Planning
(Applications: Prescribed Forms and
Procedures) Regulations 2009**

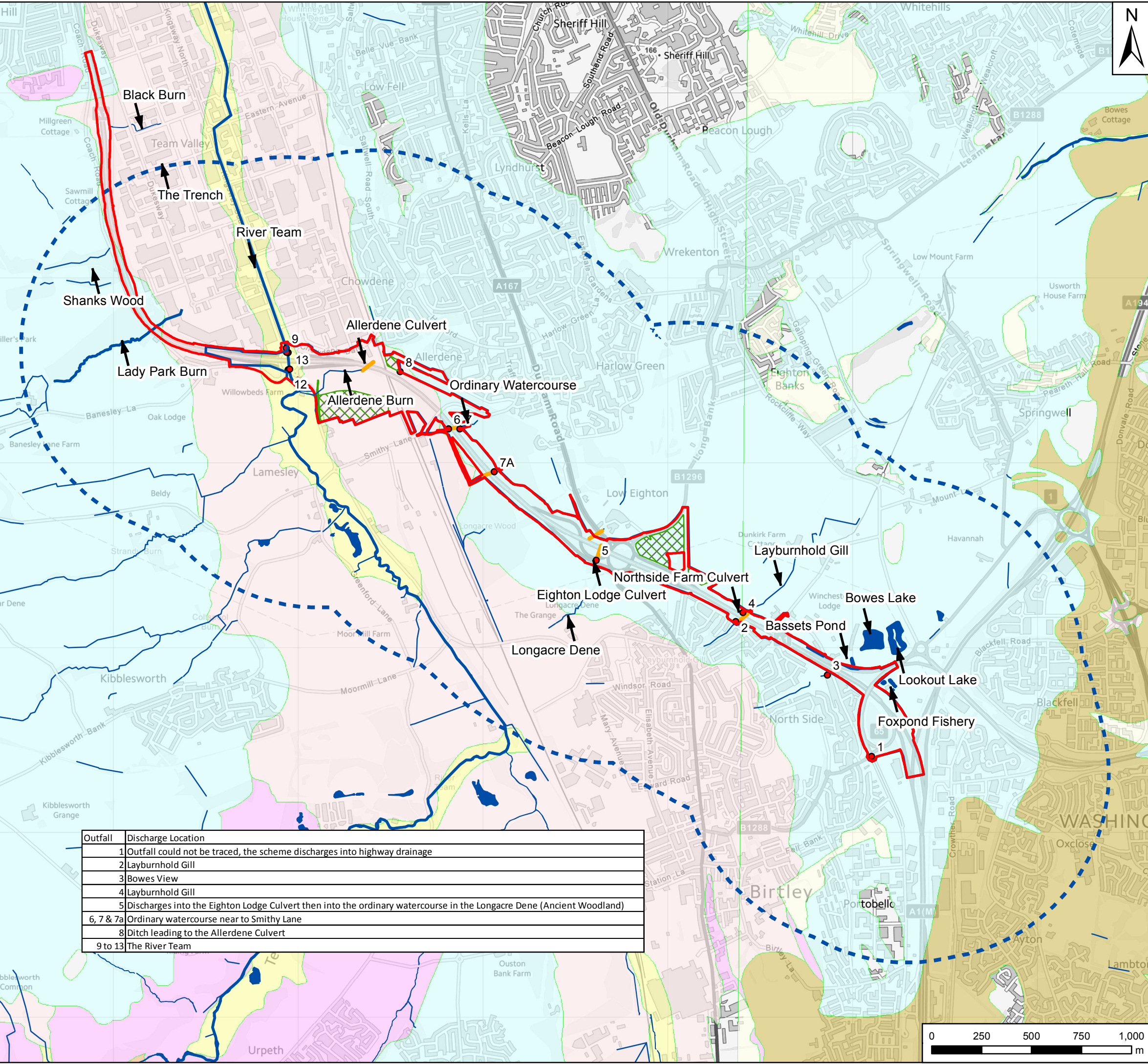
**A1 Birtley to Coal House
Development Consent Order 20[xx]**

**Environmental Statement -
Figures**

| | |
|---|--|
| Regulation Reference: | APFP Regulation 5(2)(a) |
| Planning Inspectorate Scheme Reference | TR010031 |
| Application Document Reference | TR010031/APP/6.2 |
| Author: | A1 Birtley to Coal House Project Team, Highways England |

| Version | Date | Status of Version |
|----------------|----------------|--------------------------|
| Rev 0 | 14 August 2019 | Application Issue |

User Name: UKGDH001 Date Saved: 31/07/2019 15:16:43
 Document Path: \\uk.wsgroup.com\central\data\Projects\700419\A1\BCH\PCF Stage 3 and 4\02 WIP\WIA Water and Flood Risk\02 Drawing\GIS\Figure 13.6 - Superficial Deposits Designations.mxd



Key

- Scheme Footprint
- Study Area
- Study Area 1km Buffer
- Proposed Construction Compounds
- Outfalls
- Culverts
- Watercourses

Superficial Deposits Designations

- Glaciolacustrine Deposits, Devensian - Clay And Silt
- Alluvium - Clay, Silt, Sand And Gravel
- Till, Devensian - Diamicton
- Glaciofluvial Deposits, Devensian - Sand And Gravel
- Pelaw Clay Member - Clay

| Rev | Date | Description | By | Chk'd | App'd |
|-----|----------|--------------|-----|-------|-------|
| P05 | 31/07/19 | Fourth Issue | GH | SS | AS |
| P04 | 24/04/19 | Third Issue | EHC | SS | AS |
| P03 | 28/02/19 | Second Issue | EHC | SS | AS |
| P02 | 12/12/18 | First Issue | EHC | SS | AS |
| P01 | 29/11/18 | First Issue | EHC | SS | AS |

Suitability: Suitable for Information Status: S2

PINS Reference Number: TR010031



Project Title: A1 Birtley to Coal House Scheme

Drawing Title: Figure 13.6 Superficial Deposits Designations Regulation 5 (2) (a)

| Scale | Drawn | Checked | Approved | Authorised |
|---------------|----------|----------|----------|------------|
| 1:20,000 | EHC | SS | AS | NJA |
| Original Size | Date | Date | Date | Date |
| A3 | 29/11/18 | 04/12/18 | 06/12/18 | 12/12/18 |

| Drawing Number | Originator | Volume | Revision |
|----------------|------------|--------|---------------|
| HE551462 | WSP | | P05 |
| B2CH | | | PW Stage Code |

| Section | Type | ID | Direction | Type | Role | Number |
|---------|------|----|-----------|------|------|--------|
| | | | | | | |

| Outfall | Discharge Location |
|-----------|---|
| 1 | Outfall could not be traced, the scheme discharges into highway drainage |
| 2 | Layburnhold Gill |
| 3 | Bowes View |
| 4 | Layburnhold Gill |
| 5 | Discharges into the Eights Lodge Culvert then into the ordinary watercourse in the Longacre Dene (Ancient Woodland) |
| 6, 7 & 7a | Ordinary watercourse near to Smithy Lane |
| 8 | Ditch leading to the Allerdene Culvert |
| 9 to 13 | The River Team |



If you need help accessing this or any other Highways England information, please call **0300 470 4580** and we will help you.

© Crown copyright 2019.

You may re-use this information (not including logos) free of charge in any format or medium, under the terms of the Open Government Licence. To view this licence:

visit www.nationalarchives.gov.uk/doc/open-government-licence/

write to the **Information Policy Team, The National Archives,**

Kew, London TW9 4DU, or email

psi@nationalarchives.gsi.gov.uk.

This document is also available on our website at www.gov.uk/highways

If you have any enquiries about this document A1BirtleytoCoalhouse@highwaysengland.co.uk or call **0300 470 4580***.

*Calls to 03 numbers cost no more than a national rate call to an 01 or 02 number and must count towards any inclusive minutes in the same way as 01 and 02 calls.

These rules apply to calls from any type of line including mobile, BT, other fixed line or payphone. Calls may be recorded or monitored.

Registered office Bridge House, 1 Walnut Tree Close, Guildford GU1 4LZ
Highways England Company Limited registered in England and Wales number 09346363